

www.partenza.it

COMPANY PROFILE





**YOUR VISION
IN EVERY
DETAIL**

Partenza's Factories

Kize

Frames out

Simetri

CONTENT

- / 07 WHO WE ARE
- / 09 OUR SERVICES
- / 10 OUR WORK PROCESS
- / 14 WHY CHOOSE US
- / 18 OUR FACTORIES & TECHNOLOGIES
- / 24 CERTIFICATES
- / 30 OUR PARTNERS
- / 34 OUR PROJECTS
- / 106 HOW MANUFACTURED
- / 114 SHIPPING & PACKAGING
- / 120 PARTENZA & SUSTAINABILITY
- / 126 CONTACT INFORMATION

PARTENZA



-WHO WE ARE-

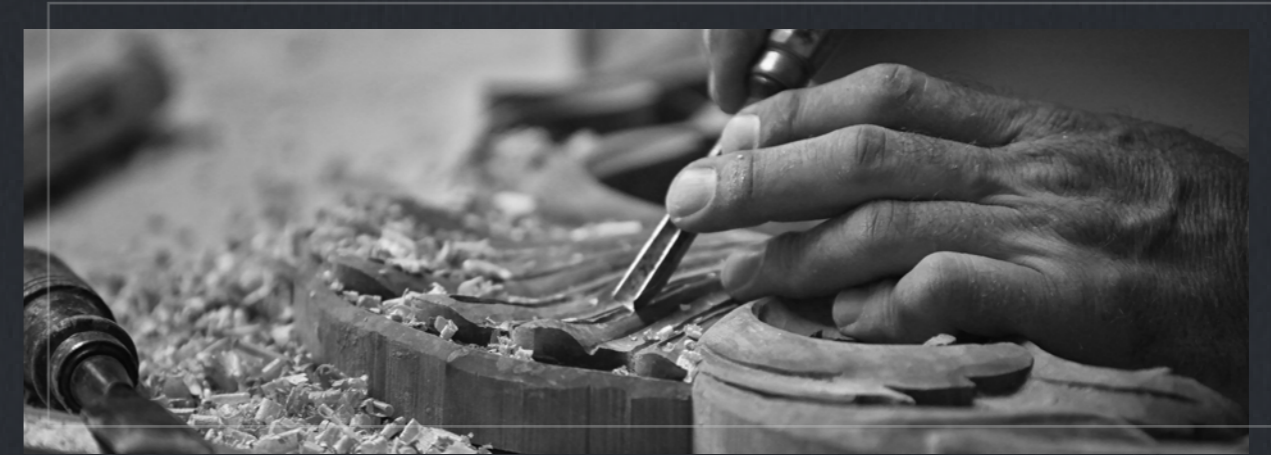
PARTENZA, established in Italy-1989, with a new branch in Turkey and a head office in Istanbul-2019.

Inspired by the Italian word referring to the start point, PARTENZA can definitely be your first and foremost starting point of furnishing and decoration, where we put our 30 years of expertise at your service.

Our factories produce and provide joinery, furniture and metal works.

PARTENZA boasts the collective experience of over 500 skilled employees, 30000 m2 of factory more than 1000 accomplished projects (hotels, restaurants and villas).

We are proud to have succeeded in the middle east; especially in Saudi Arabia, Dubai and Qatar.



-OUR SERVICES-

PARTENZA offers design & manufacturing of joinery, furniture, metalwork in addition to consulting services.

With our extensively experienced team, we are able to reflect clients dream designs and concepts into reality ensuring achieving their vision on time and within their own budget.

PARTENZA execute unmistakable end-to-end residential, commercial and hospitality designs prompt on time through step-by-step planning, sourcing certified raw materials, cutting-edge machinery and a team of innovative interior designers with high techniques.



**OUR WORK
PROCESS**

**MEET &
AGREE**

**DESIGN &
CONCEPT**

**TIME
SCHEDULE &
MANUFACTURING**

**INSPECTION &
PACKING**



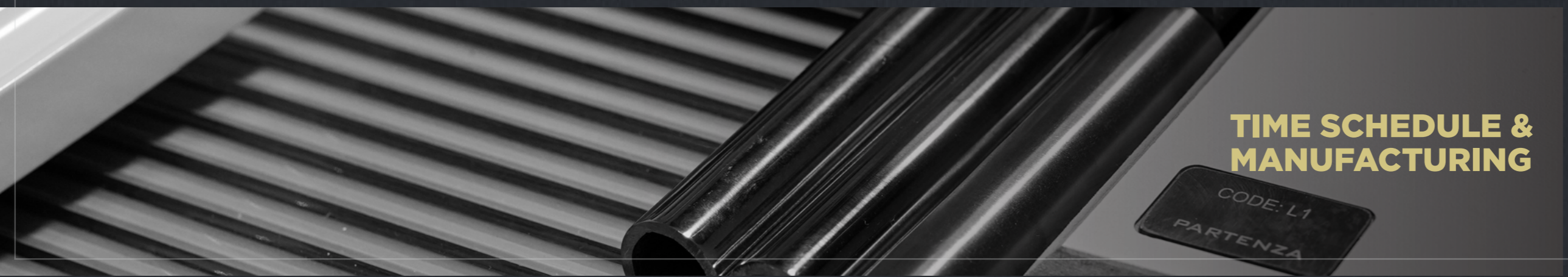
MEET & AGREE

PARTENZA is glad to Meet the clients to acknowledge their requirements, alongside creating a work environment that focuses on what gives the best return of client's interests Considering Budget, Quality & Time.

Our expert team of designers are always ready to present the best ideas to reflect client's concepts (If the clients have their own designs, our aim will be directed to focus on the details).



DESIGN & CONCEPT



TIME SCHEDULE & MANUFACTURING

PARTENZA specifies the workflow to guarantee time & quality control according to the selected plan.

Client can check the production process in the final stage before packing takes place, whereas PARTENZA assures safe and smooth packing & loading. Request your fully-free sample delivered to you for any product (Joinery, Loose furniture or any Metal work) to inspect it.



INSPECTION & PACKING

WHY CHOOSE US

LOREM IPSUM

-WHY CHOOSE US-

OUR ADVICE & SERVICES

Our talented Design Associates and engineers are ready to assist our clients with space planning, furniture selection, color and material suggestions ,for projects of any size and the company's sophisticated management system ensures precision and flexibility with clients.

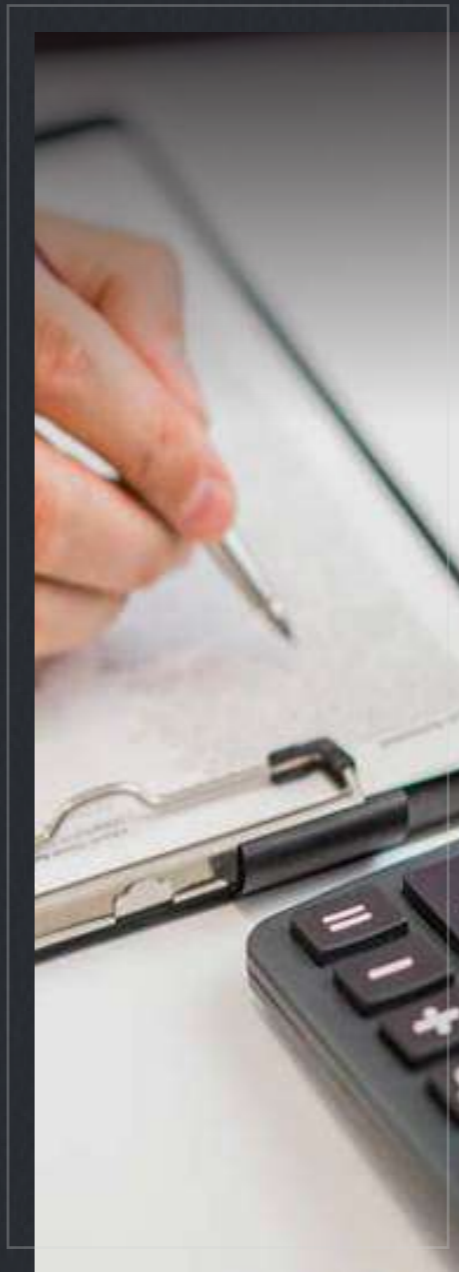


OUR QUALITY

Quality is a word used often, but here in PARTENZA we mean it. The quality of PARTENZA products is the sum of all the factors combined to make every single product unique. Precision and care given to every detail are done by master craftsmen, tailors and quality designers. All of our products are designed to be highly functional and Long-lasting

OUR PRICING POLICY

prices are fair. We are on a deep understanding of our clients' needs and available budgets. There are no surprise bills. Any unexpected or additional expenses must be pre-approved by clients.

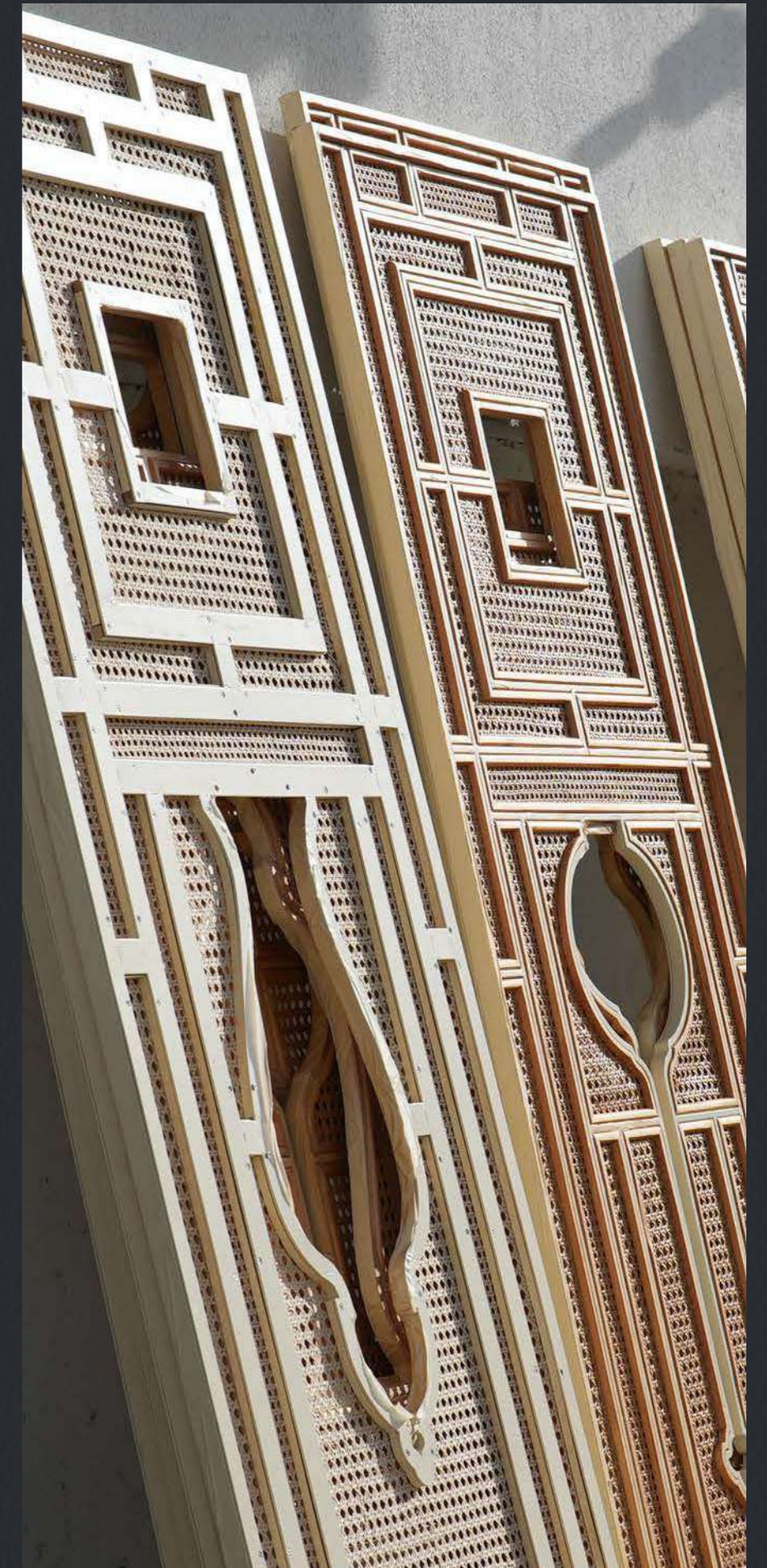


OUR TIME MANAGEMENT

The production process enhances craftsmanship's designs and supports it with technology in order to guarantee short delivery times.



OUR FACTORIES & TECHNOLOGIES



7 AXIS ROBOT ARM CNC

THE 7 AXIS ROBOT ARM CNC COMES WITH SEVEN AXES OF MOTION, WHICH ALLOWS IT TO TACKLE COMPLEX TASKS WITH EASE AND HELP IN CARVING PRECISE COMPONENTS .



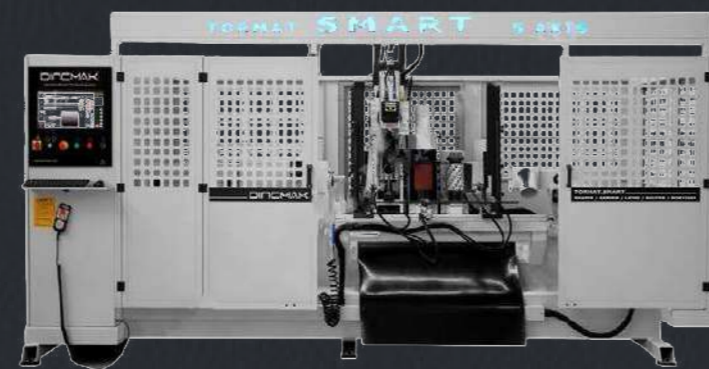
KUPER/FL/ INNOVATION SERIES LONGITUDINAL SPLICER

THE KUPER/FL/INNOVATION SERIES LONGITUDINAL SPLICER IS A VENEER PROCESSING MACHINE THAT COVERS A WIDE RANGE OF APPLICATIONS, FROM VENEER CLIPPING AND SPLICING TO VENEER TRIMMING, ENSURING THE HIGHEST QUALITY IN VENEER WORK.



5 AXIS LATHE MACHINE

5-AXIS LATHE MACHINE IS A FLAGSHIP MACHINE THAT CAN MOVE AND ROTATE THE WORKPIECE IN FIVE DIFFERENT DIRECTIONS, WHICH OFFERS A HIGH DEGREE OF PRECISION AND VERSATILITY WITH INFINITE POSSIBILITIES TO PROCESS FIVE SIDES OF A PART IN A SINGLE SETUP.



CNC ROUTER MACHINE

CNC ROUTER MACHINE CAN CURVE A BLOCK OF WOOD INTO INTRICATE SHAPES OR DESIGNS WITH INCREDIBLE ACCURACY, THANKS TO ITS HIGHLY ADVANCED COMPUTER PROGRAMMING AND CONTROL SYSTEMS.



OUR TECHNOLOGIES

ARE A PROOF OF OUR DEDICATION TO PRESERVING TRADITIONAL CRAFTSMANSHIP WHILE EMBRACING THE POSSIBILITIES OF THE DIGITAL AGE.

OUR FURNITURE IS BORN FROM THE SYNERGY OF SKILLED DESIGNERS, ENGINEERS SCIENTISTS WHO BELIEVE IN THE VALUE OF AUTOMATION IN THE MANUFACTURING PROCESS TO ENSURE PRECISION AND EFFICIENCY.

CERTIFICATES







CERTIFICATE

**Partenza Mühendislik İnşaat İç ve Dış
Ticaret Ltd. Şti.**

Mahmutbey Mah. Taşocağı Yolu Cad. B Blok Ağaoğlu My
Office No: 3 / 297 Bağcılar İstanbul Turkey

The above-mentioned organization implements and maintains a management system in the following scope, and its compliance with the standard has been approved by KingCert.

ISO 9001:2015 Quality Management System

Scope : Design and Production Any Kind of Hotel, Restaurant and Residential Furniture: Bed, Wardrobe, Chairs, Sofa, Kitchen Cabinet, Table, Bar Counter, Service Station, Wooden Pergola, Door, Window, Vanity, Wall Cladding, Joinery, Wood Work, Metal Work, Loose Furniture
IAF/EA Code: 23

This certificate is valid during above mentioned company perform the requirements of ISO 9001:2015 standard and fulfill all responsibilities to KingCert.

Certificate Publication Date : 02.11.2022
Cert. Last Issue Date : 02.11.2022
Cert. Expiry Date : 01.11.2023
Cert. Period Exp. Date : 01.11.2025
Certificate Number : H1687312284Q




King Cert International Certification Ltd.
Director

King Cert International
Certification Ltd.
Manastirski Livadi, Str. Lavski
Rid 19, Sofia Bulgaria
info@kingcert.com
FR.25 / 01.20.2016 / 04.09.2019 / 02

Hereby, King Cert International Certification Ltd., certifies that the above stated company have the appropriate management system according to the requirements of the above standards. This certificate is valid for three years as long as the system effectively maintained and surveillance audits are carried out. The validity of the certificate can be checked through www.kingcert.com. The certificate is property of King Cert International Certification Ltd. and shall be returned if so requested.



CERTIFICATE

Certificate No: A-22118

**Partenza Mühendislik İnşaat İç ve Dış
Ticaret Ltd. Şti.**

Mahmutbey Mah. Taşocağı Yolu Cad. B Blok Ağaoğlu My Office No: 3 /
297 Bağcılar İstanbul Turkey

This certificate is issued for the above-mentioned company, according to the following scope given by the WQR Certification.

FSC

Forest Stewardship Council Certificate

Scope of Certification

Design and Production Any Kind of Hotel, Restaurant and Residential Furniture: Bed, Wardrobe, Chairs, Sofa, Kitchen Cabinet, Table, Bar Counter, Service Station, Wooden Pergola, Door, Window, Vanity, Wall Cladding, Joinery, Wood Work, Metal Work, Loose Furniture

Release Date
02.11.2022
Last Issue Date
02.11.2022
Expiry Date
01.11.2023
Period Exp. Date
01.11.2025


Certification Manager

WQR International Certification Ltd.
www.wqcert.com | info@wqcert.com

The validity of the certificate can be checked through www.wqcert.com.

A photograph showing two people's hands working on a wooden architectural model of a building. One person is using a pencil to point at a part of the model, while the other is using a pencil and a ruler to measure a part of the model. The background is slightly blurred, showing a window with orange curtains. The text 'OUR PARTNERS' is overlaid in large, bold, yellow letters on the left side of the image.

OUR PARTNERS



OUR PROJECTS



HOTELS

FOUR SEASONS HOTEL / MOCKUP

JEDDAH - KSA

OMR HOTEL

LONDON - UK

BOURNEMOUTH HOTEL

LONDON - UK

RADISSONBLU HOTEL

MOSCOW - RUSSIA

BLU OASIS ZANZBAR HOTEL

ZANZIBAR - TANZANIA

BOKA PLACE HOTEL

TIVAT - MONTENEGRO

HILTON GARDEN INN HOTEL

DOHA - QATAR

HILTON GARDEN INN HOTEL

TBILISI - GEORGIA

SHERATON BATUMI HOTEL

BATUMI - GEORGIA

LOTTE HOTEL

MOSCOW - RUSSIA

BLU OASIS RESORT

ZANZIBAR - TANZANIA

GOLDEN EYE

SVILENGRAD - BULGARIA

DERNA PEARL

LDERNA - LIBYA

NOVOTEL

RIYADH - KSA

RUSSIA HOTEL

MOSCOW - RUSSIA

SHERATON ASTANA

ASTANA - KAZAKHSTAN

ASCOTT HOTEL

AL KHOBER - KSA

ASCOTT RESORT

RIYADH - KSA

SIX SENSES

MUĞLA - TURKEY

RIXOS KRASNAYA POLYANA

MOSCOW - RUSSIA

DOUBLE TREE BY HILTON / MOCKUP ROOM

JIZAN - JEDDAH - K.S.A

SHERATON BATUMI HOTEL

BATUMI - GEORGIA

DOUBLE TREE BY HILTON

HATAY - TURKEY

ABU DHABI PLAZA / APARTMENT SHERATON HOTEL

ASTANA - AZERBAIJAN

ABU DHABI PLAZA SHERATON HOTEL

ASTANA - KAZAKHISTAN

ILICA HOTEL SPA &
WELLNESS THERMAL RESORT

CESME IZMIR - TURKEY

HYATT REGENCY HOTEL

ATAKOY - ISTANBUL - TURKEY

RAMADA HOTEL

BAKU - AZERBAIJAN

DIVAN HOTEL / SPA

ISTANBUL - TURKEY

KAYA LALEH PARK HOTEL

TEBRIZ - IRAN

JUMEIRAH HOTEL

BAKU - AZERBAIJAN

TAXIM HILL HOTEL

ISTANBUL - TURKEY

DOUBLE TREE BY HILTON / (MODA) HOTEL

ISTANBUL - TURKEY

RESTAURANT & CAFÉ

EM SHEREF	ALKHOBAR - KSA
GODIVA / MALL OF EMIRATES	DUBAI - UAE
GODIVA / ROSHANA	JEDDAH - KSA
GODIVA / RED SEA	JEDDAH - KSA
NOOA	RIYADH - KSA
WADI	RIYADH - KSA
MNKY HOUSE	RIYADH - KSA
CELLO	RIYADH - KSA
BALCONA	RIYADH - KSA
BURJ ELHAMAM / RIYADH FRONT	RIYADH - KSA
ZEST / WADI QORTUBA COMPOUND	RIYADH - KSA
RIPPLE / WADI QORTUBA COMPOUND	RIYADH - KSA
PRET A MANGER / JEDDAH AIRPORT	JEDDAH - KSA

BURJ ELHAMAM / ALDABAB

AL-MESHWAR

DIFFERENT

CAMELLIA / RIYADH FRONT

LOGMA / THE ZONE

OLE / THE WALK

KEY CAFÉ

TAKYA

AJINET-MARIAM

CHUNK / ALSAFARAT

SKORE

NUA

BREAD AHEAD

BATUMI - GEORGIA

DUBAI - UAE

RIYADH - KSA

RIYADH - KSA

RIYADH - KSA

RIYADH - KSA

JEDDAH - KSA

RIYADH - KSA

RIYADH - KSA

RIYADH - KSA

JEDDAH - KSA

JEDDAH - KSA

JEDDAH - KSA

DIOR / ISTINYE PARK	ISTANBUL - TURKEY
DIOR / ISTANBUL AIRPORT	ISTANBUL - TURKEY
DIOR	MOSCOW - RUSSIA
LAZURDE	JEDDAH - KSA
LAZURDE	ABHA - KSA
HEKAYH	RIYADH - KSA
MITSUBISHI BRANCHES	ISTANBUL - TURKEY
TIFFANY & CO	BAKU - AZERBAIJAN
PRADA	ALMATY - KAZAKHSTAN
TIFFANY & CO	ISTANBUL - TURKEY
DOLCE & GABBANA	BUCHAREST - ROMANIA

MR. NICKY VILLA	BUCHAREST - ROMANIA
KONACIK VILLAS	BATUMIBODRUM - TURKEY
PORTONOVI MARINA APARTMENTS	HERCEG NOVI - MONTENEGRO
PORTONOVI VILLAS	HERCEG NOVI - MONTENEGRO
CEM VILLA	ISTABUL - TURKEY
MERIDYEN SUITES	ISTANBUL - TURKEY
XEZRI VILLA	BAKU - AZERBAIJAN
FOUR WINDS RESIDENCE	ISTANBUL - TURKEY
WINDOWIST PLAZA	ISTANBUL - TURKEY
ATAKAS	ISTANBUL - TURKEY
RESADIYE VILLAS	ISTANBUL - TURKEY

OFFICE & BANK & AIRPORT

TFG	LONDON - UK
HML	LONDON - UK
OCH OFFICE	TBILISI - GEORGIA
SOLO BANK / BUSINESS BRANCH	TBILISI- GEORGIA
BAHRAIN AIRPORT	MANAMA - BAHRAIN
SOLO BANK BOG	BATUMI - GEORGIA
SOLO BANK BOG	TBILISI - GEORGIA
SOLO BANK BOG / GLDANI	TBILISI - GEORGIA
BANK OF GEORGIA	GEORGIA
ALMATA OFFICE	ALMATY - KAZAKHSTAN
GALLERY OFFICE / RADISSON BLU	RIYADH - KSA
ALMA HALLS / ALMA HOTEL	RIYADH - KSA
UNIFIED	KSA



SHERATON BATUMI HOTEL

LOCATION: BATUMI - GEORGIA



LOTTE HOTEL

LOCATION: MOSCOW





GOLDEN EYE HOTEL

LOCATION: SVILENGRAD - ULGARIA



GOLDEN EYE HOTEL

LOCATION: SVILENGRAD - ULGARIA



NOVOTEL

LOCATION: RIYADH-KSA



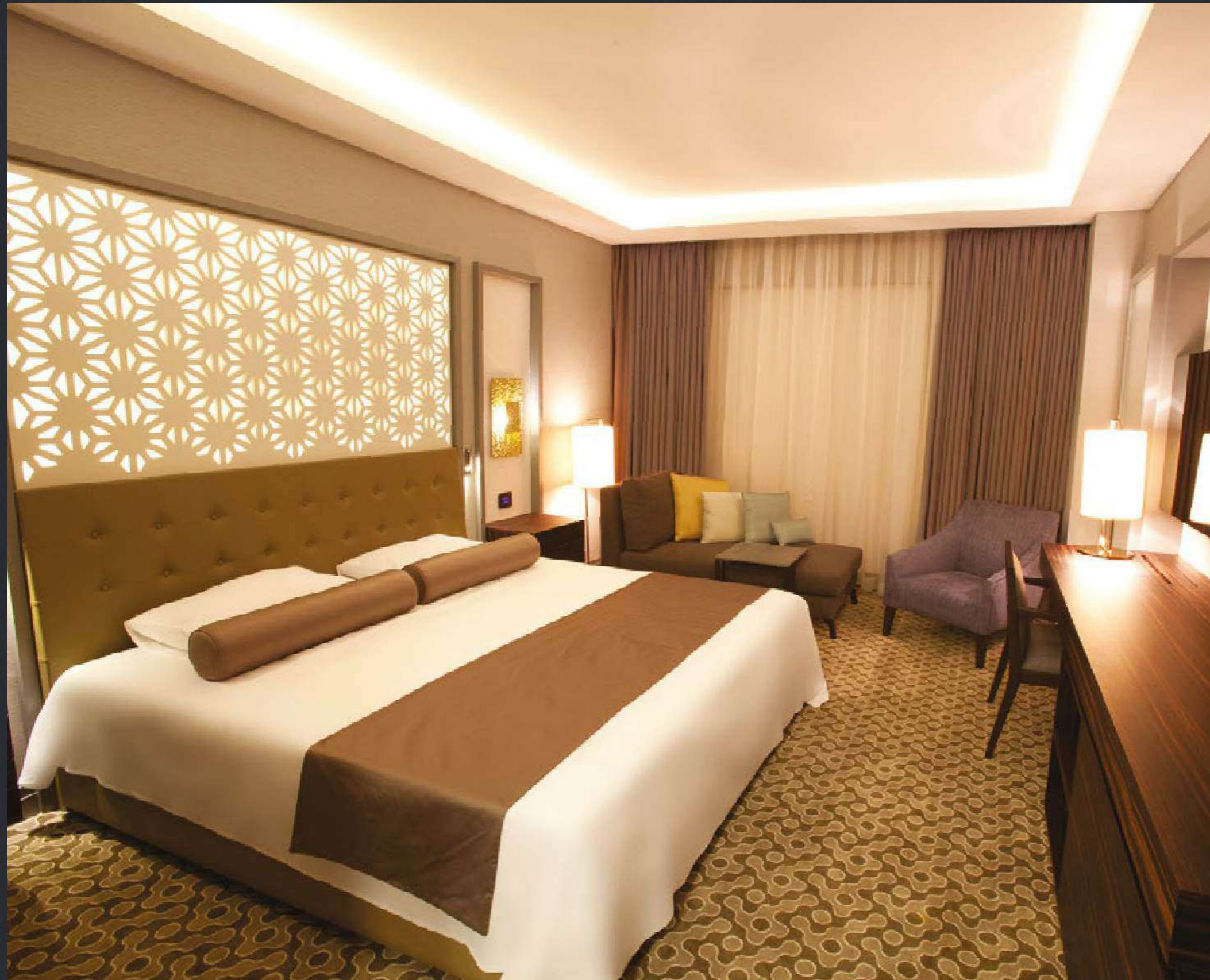
SIX SENSES

LOCATION: MUĞLA - TURKEY



SHERATON ASTANA

LOCATION: KHAZAKHSTAN



RIXOS KRASNAYA POLYANA

LOCATION: MOSCOW, RUSSIA





FOUR SEASONS HOTEL

LOCATION: JEDDAH - KSA



SHINE HOTEL

LOCATION: ANTALYA, TURKEY



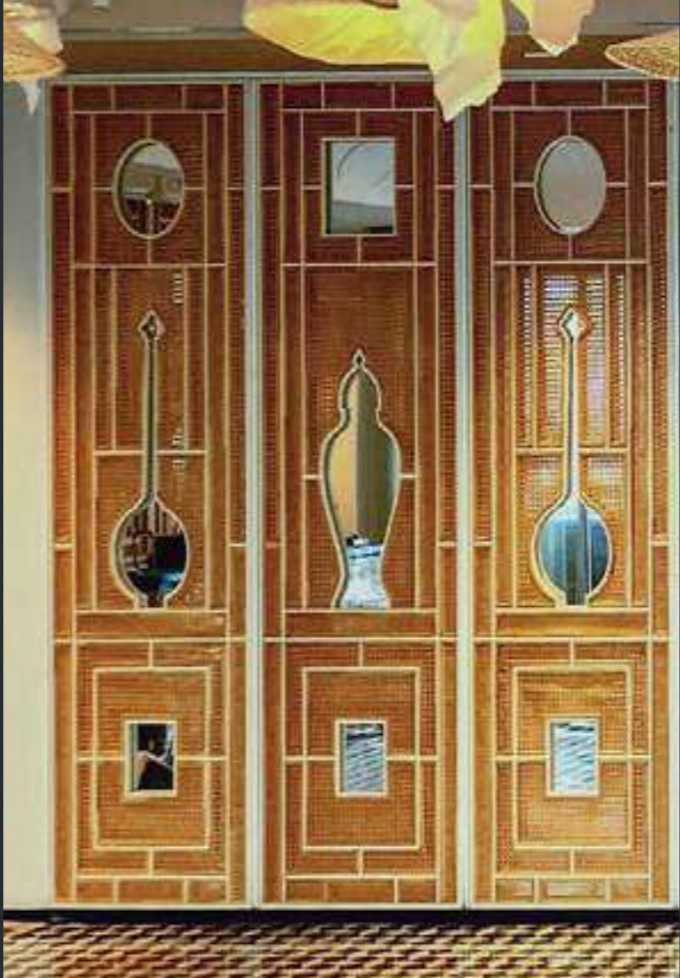
HILL HOTEL

LOCATION: TAKSIM - ISTANBUL, TURKEY



EM SHERIF

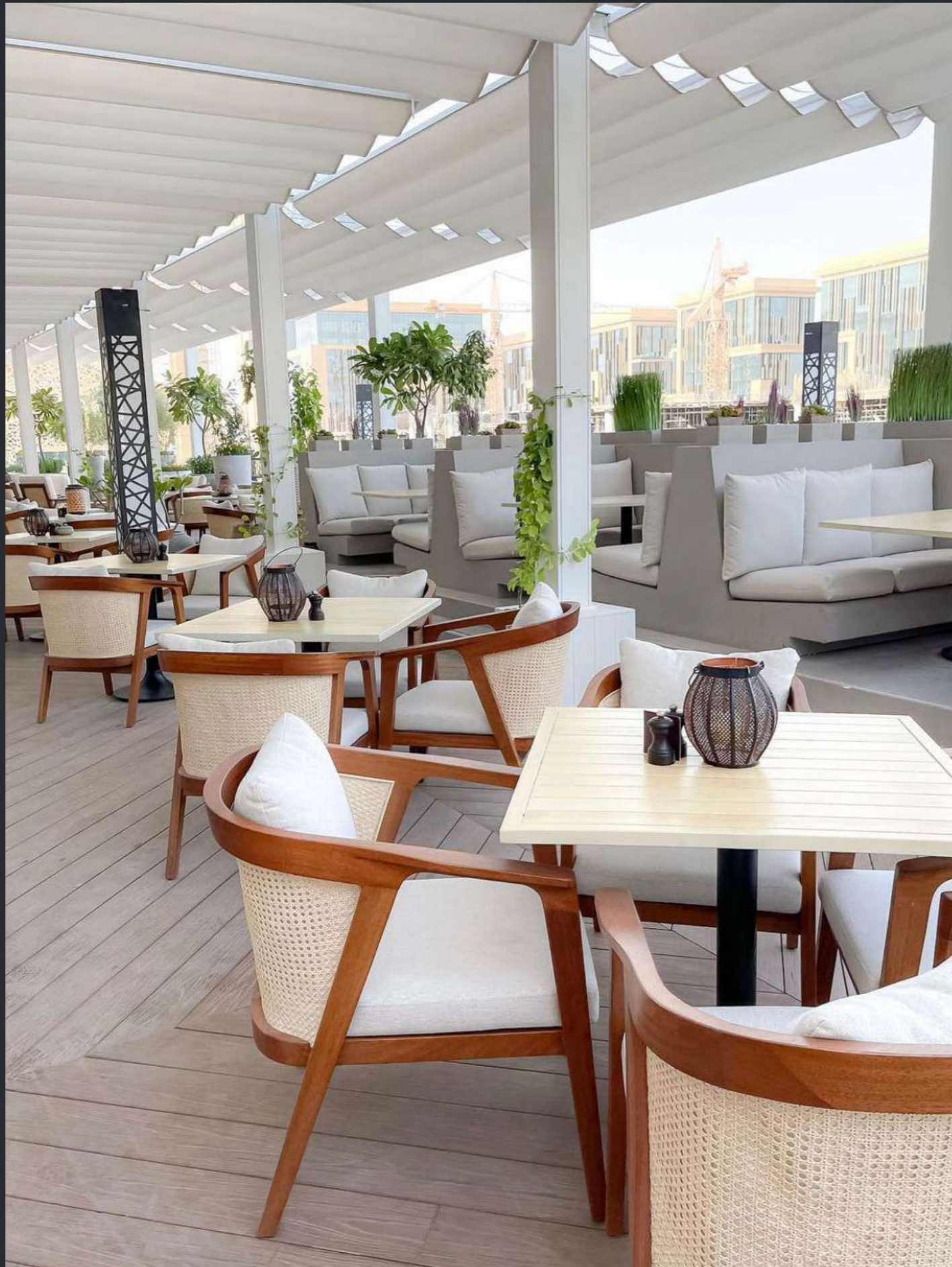
LOCATION: RIYADH, KSA



NOOA

LOCATION: RIYADH, KSA





GODIVA

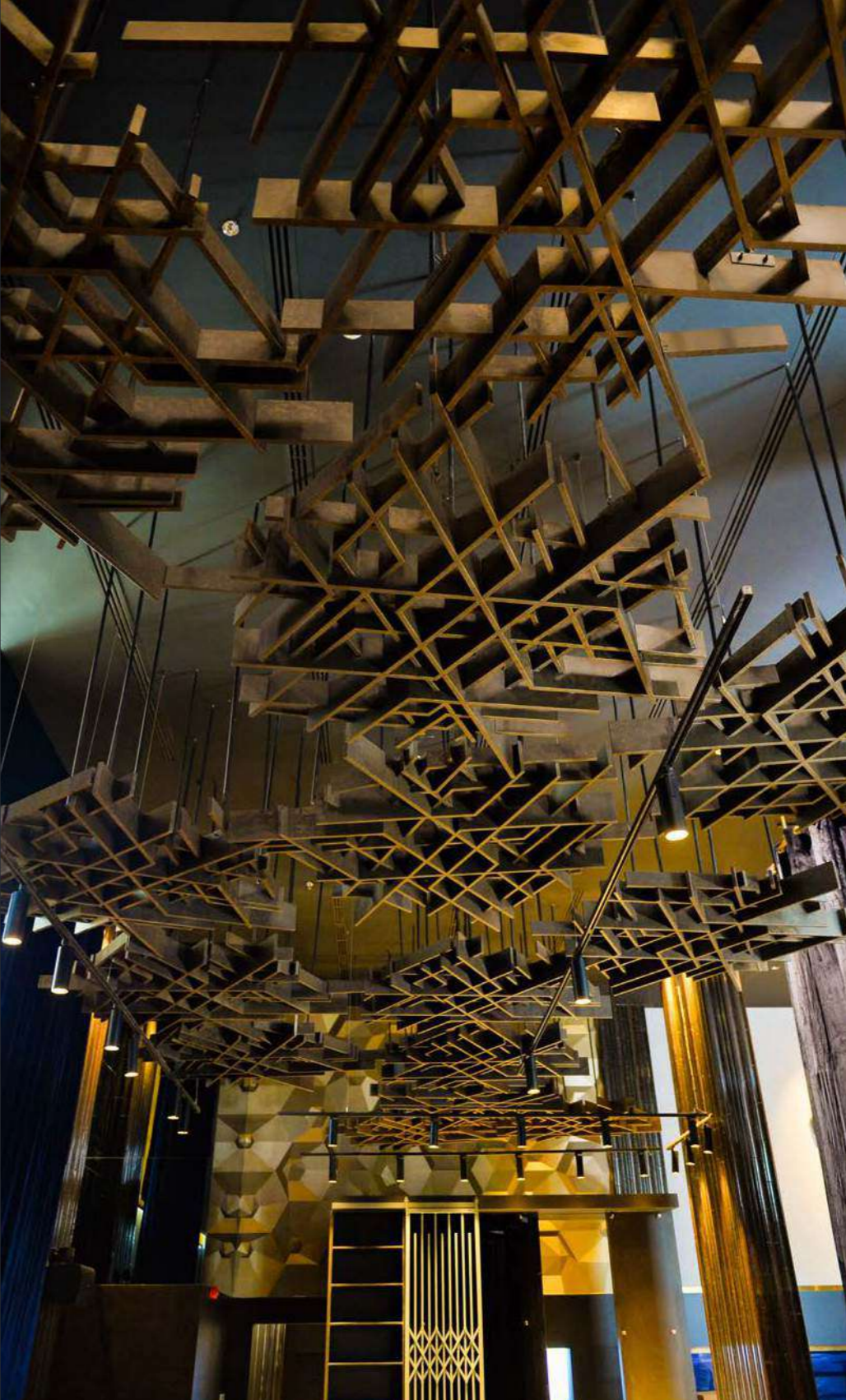
LOCATION: ROSHANA - JEDDAH, KSA





MONKEY HOUSE

LOCATION: RIYADH, KSA





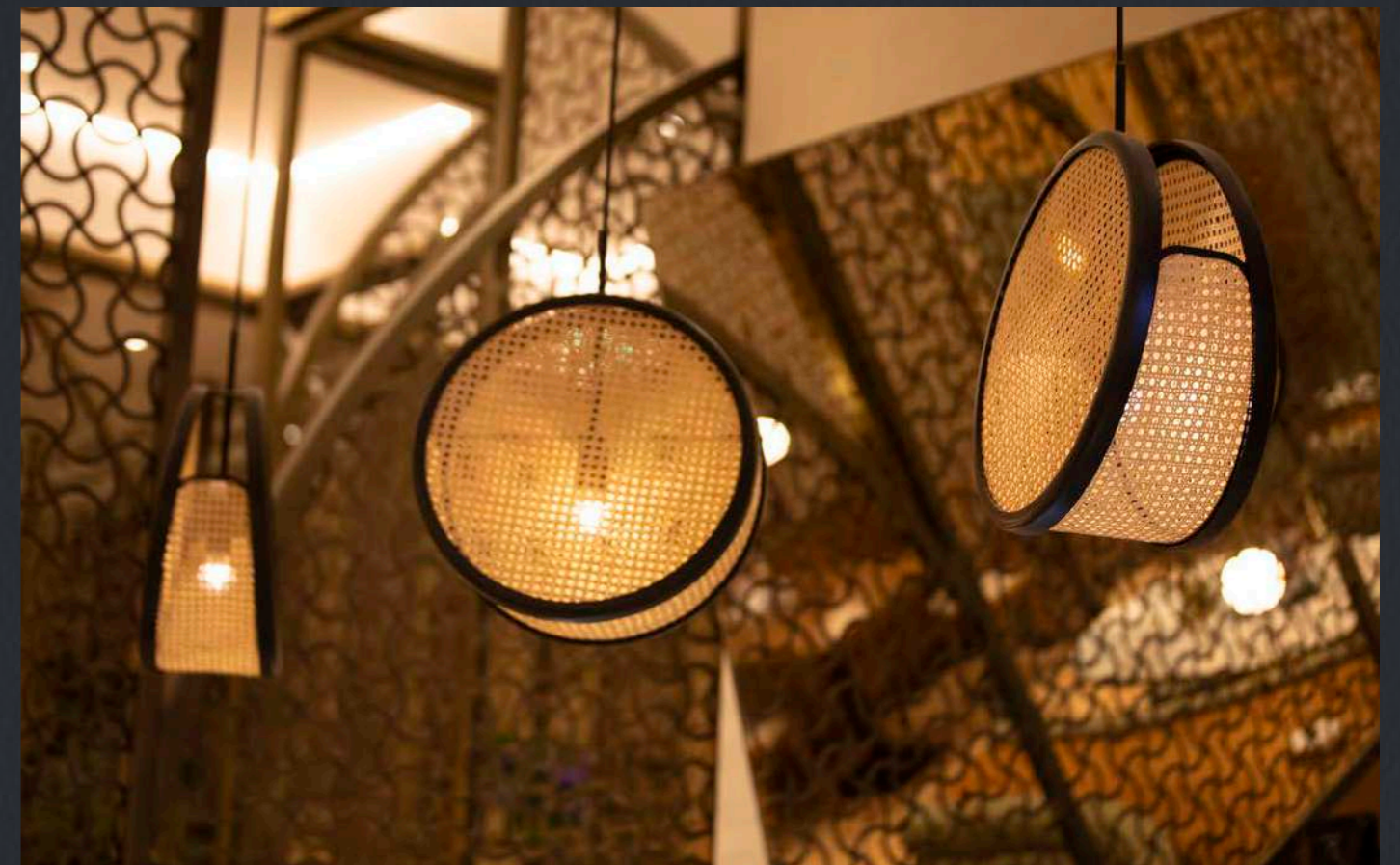
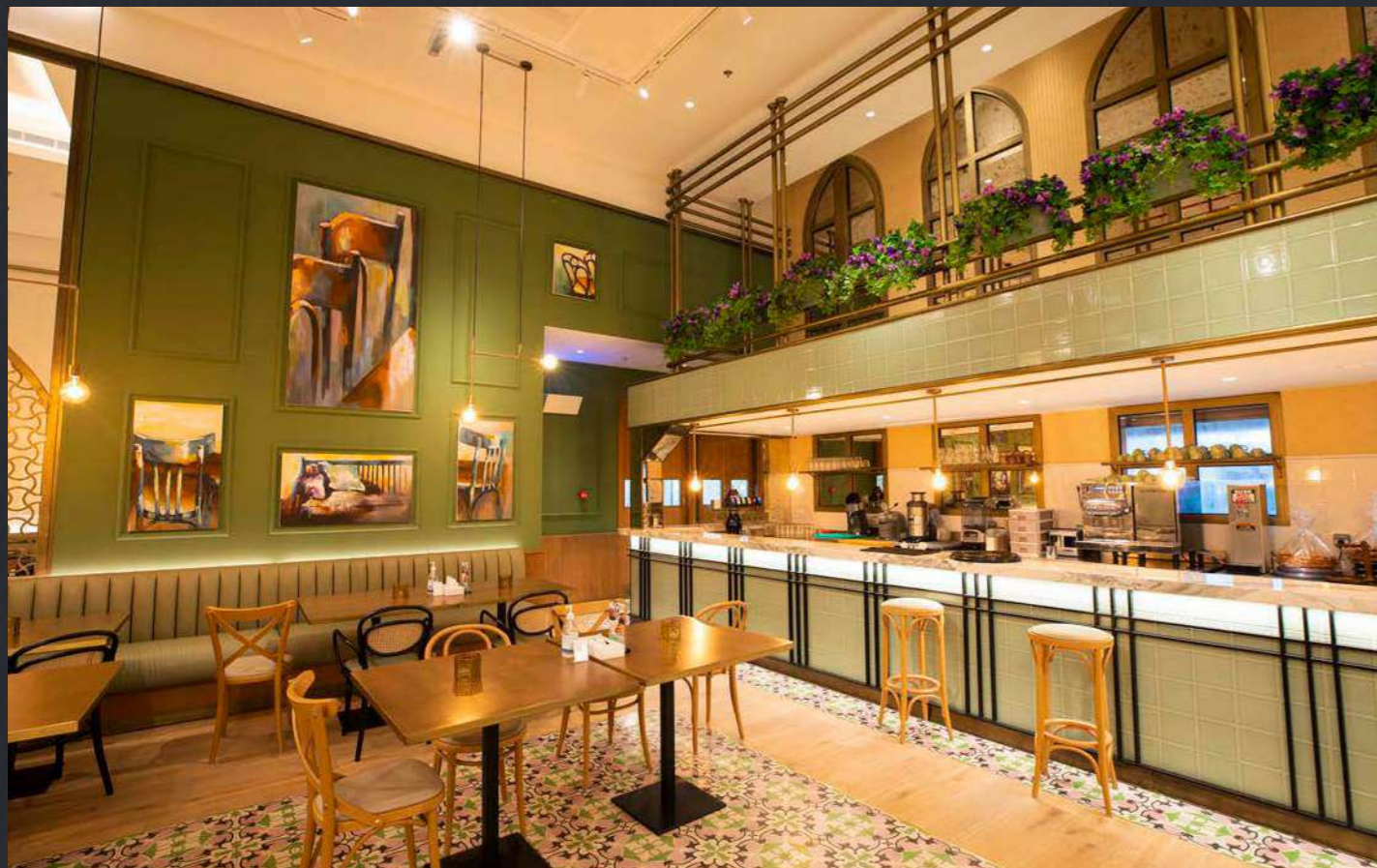
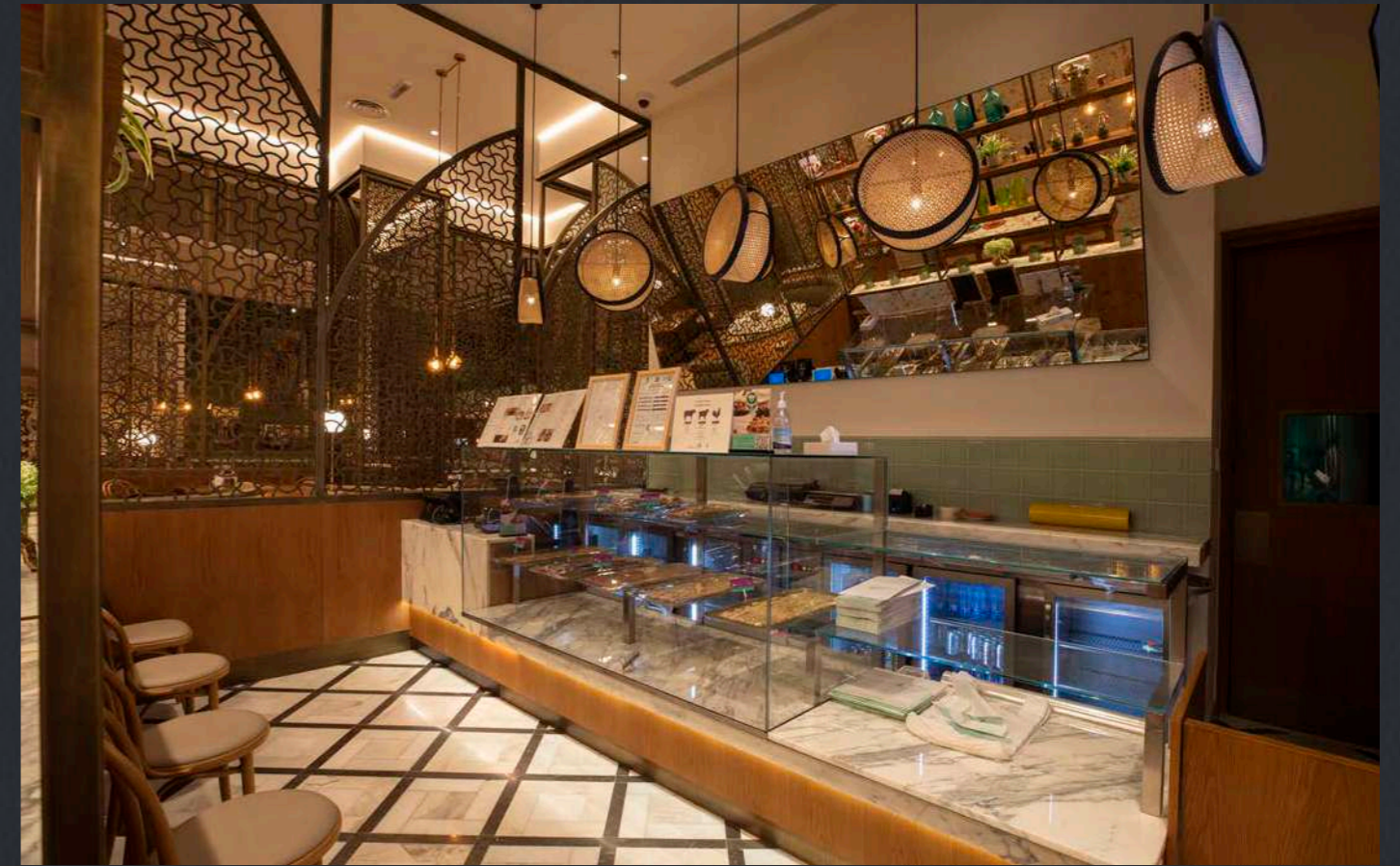
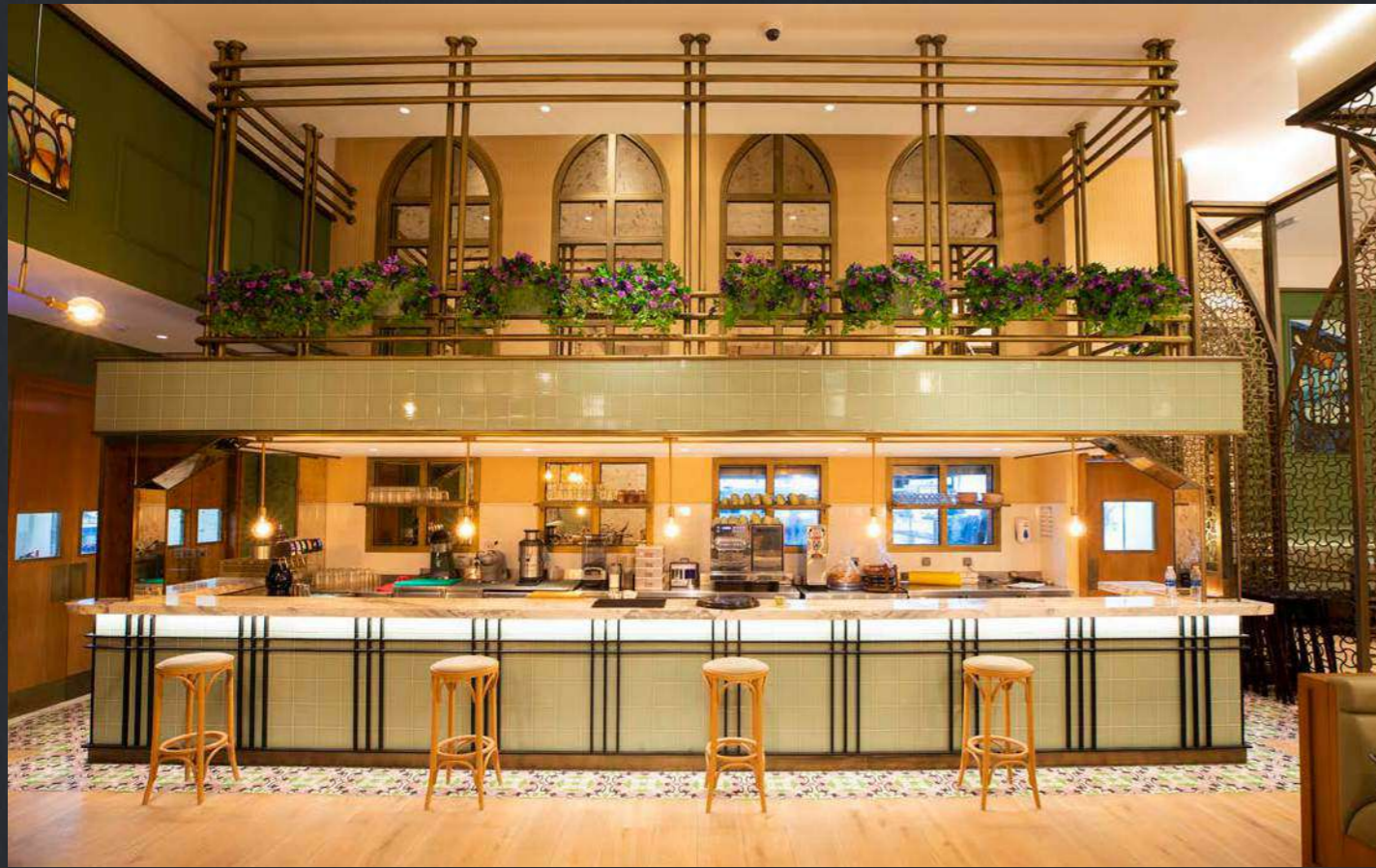


BURJ AL HAMAM

LOCATION: DABBAB STREET – RIYADH, KSA







CELLO

LOCATION: RIYADH, KSA





GODIVA

LOCATION: MOE - UAE



DIFFERENT

LOCATION: TAL PLAZA - RIYADH, KSA





CAMELLIA

LOCATION: RIYADH FRONT – RIYADH, KSA





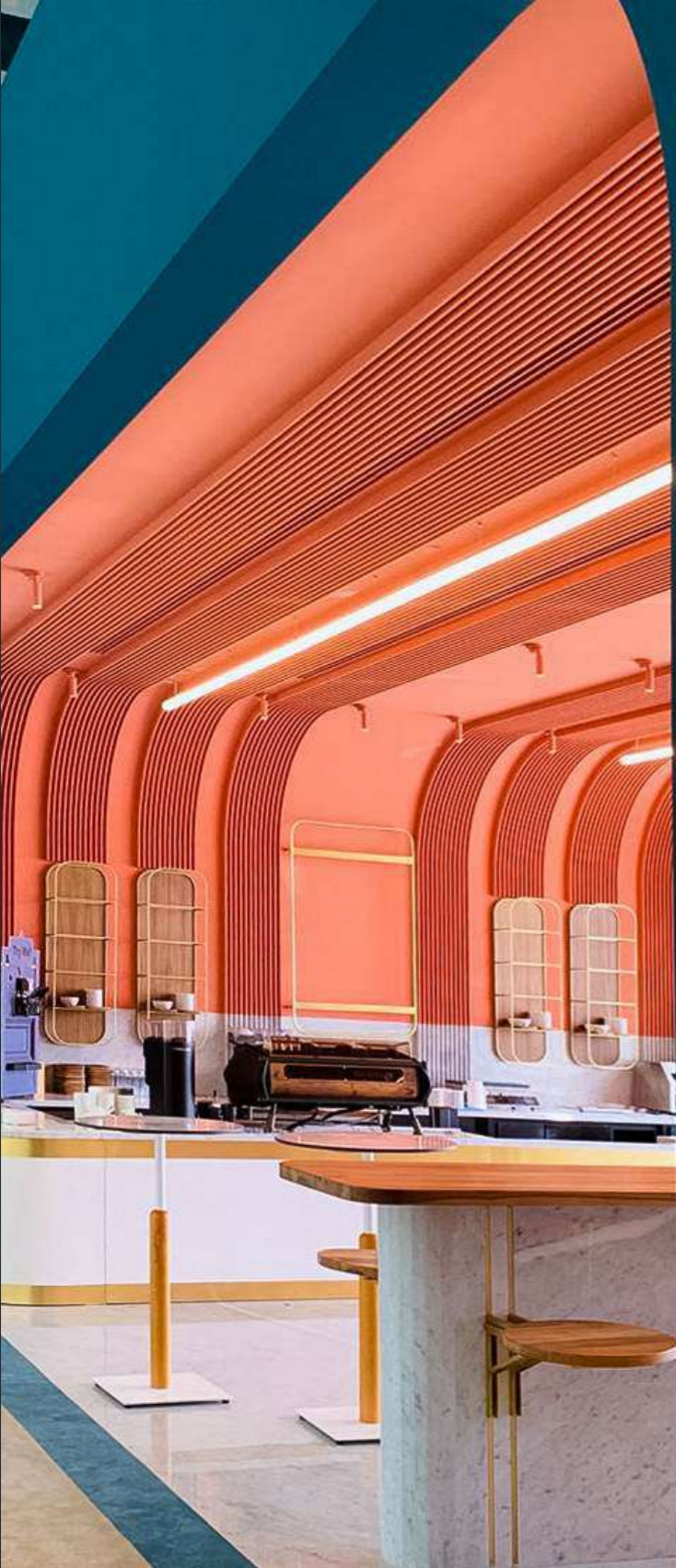
LOGMA

LOCATION: THE ZONE – RIYADH, KSA



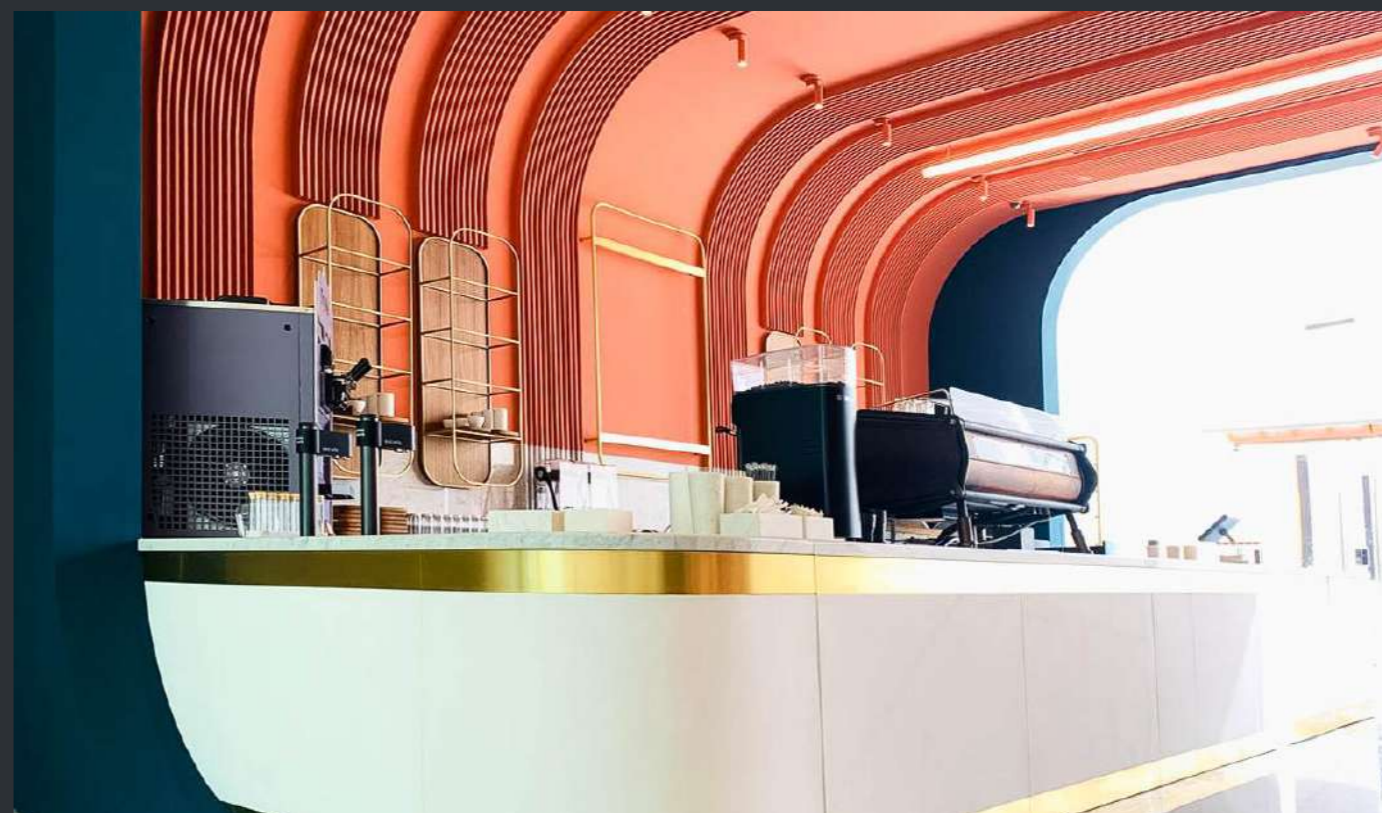
CHUNK

LOCATION: DIPLOMATIC QUARTER – RIYADH, KSA



KEY CAFE

LOCATION: PRESTIGE MALL – JEDDAH, KSA



ASCOTT

LOCATION: RIYADH - KSA



ASCOTT

LOCATION: ALKHOBER - KSA



HEKAYH

LOCATION: RIYADH, KSA



PATCHI

LOCATION: THE ZONE – RIYADH, KSA



DERNA PEARL

LOCATION: DERNA - LIBYA



HOW MANUFACTURED







SHIPPING & PACKAGING

PARTENZA®





OWE REACH THE CULMINATION OF OUR PROCESS:

THE PACKAGING AND SHIPPING PHASE. THIS ALSO INVOLVES THE CAREFUL SELECTION OF ACCOMPANYING ELEMENTS AND ACCESSORIES TAILORED TO YOUR PROJECT'S UNIQUE NEEDS.

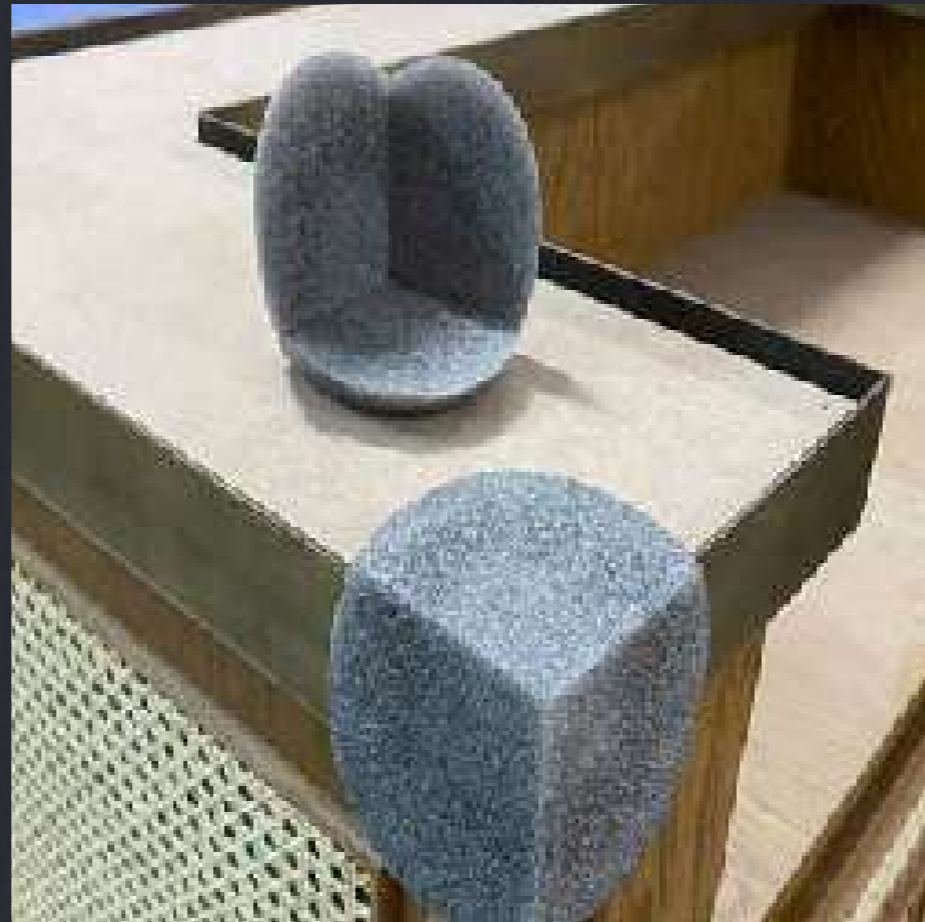
EVERY PIECE UNDERGOES A QUALITY INSPECTION TO ENSURE COMPLIANCE WITH THE DESIGN SPECIFICATIONS BEFORE BEING TRANSPORTED TO YOUR VENUE. WE WILL FOLLOW THE SHIPPING OR FREIGHT METHOD THAT BEST SUITS YOUR PREFERENCES.



OUR PACKAGING POLICY SYSTEM IS TO PACK ALL OUR PRODUCTS IN WOODEN BOXES AFTER BEING WRAPPED SEPARATELY IN AN ORGANIZED AND ACCURATE WAY.



OUR PACKAGING IS SAFELY SUPPORTED & ARRANGED TO ENSURE A HARMLESS DELIVERY OF THE PRECIOUS PRODUCTS.



BECAUSE SMALL DETAILS ALWAYS MATTER, PARTENZA TAKES CARE OF THE FINER DETAILS WHILE WRAPPING THE PRODUCTS AS WELL TO ENSURE SAFE PACKAGING.



PARTENZA & SUSTAINABILITY



**WE COLLABORATE, IMPROVE LIVELIHOODS
AND MEASURE OUR IMPACT.**

IT'S NOT ABOUT PLANTING TREES, IT'S ABOUT THE OVERALL RESULT FOR THE ENVIRONMENT AND FOR THE PEOPLE WHO LIVE THERE. REGAINING ECOLOGICAL INTEGRITY TO ENHANCE HUMAN WELL-BEING IS KEY TO ENSURE THE FOREST WILL BE PROTECTED FOR THE LONG TERM

COLLABORATION IS FUNDAMENTAL TO BEING ABLE TO MAKE EARTH COOLER WITH TREES.



AS WE TAKE OUR NEEDS FROM NATURE



WE GIVE NATURE WHAT IT DESERVE



**WE IMAGINE A WORLD WHERE COMMUNITIES
AND NATIONS SUSTAINABLY MANAGE THEIR
FORESTS AND NATURAL RESOURCES FOR
THE BENEFIT OF OUR CLIMATE,
THE ENVIRONMENT AND HUMANITY.**

CONTACT

ITALY
MILAN BRANCH

TURKEY
İSTANBUL HEADQUARTER

UAE-DUBAI
DUBAI BRANCH

KSA
RIYADH BRANCH

PARTENZA®

✉ info@partenza.it

📷 📺 📧 📱 /partenzait

PARTENZA[®]

www.partenza.com